

Application Note

Using AN-X-DCSNet with the RSLinx OPC Server

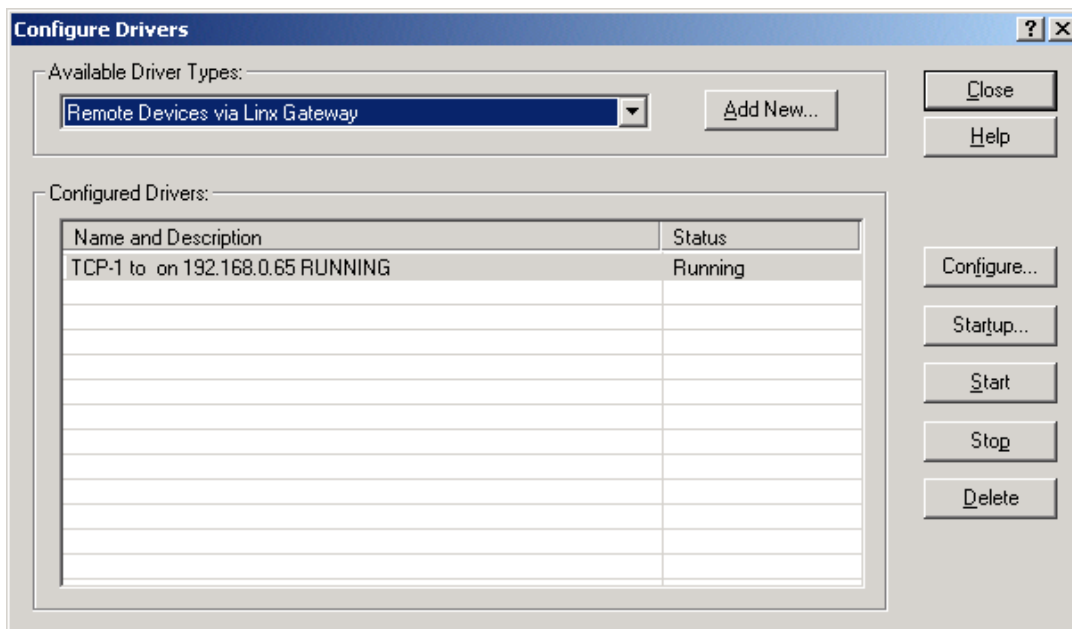


This application note describes how to configure the RSLinx OPC server to access DCSNet data on the AN-X-DCSNet module.

The AN-X-DCSNet distribution CD contains an EDS file for the AN-X module. If you have not already done so, register this file using the RSLinx EDS Registration program (Start/Programs/Rockwell Software/RSLinx Tools/EDS Hardware Registration Tool) so that the AN-X-DCSNet module does not show up as unknown (question mark icon) in RSLinx.

Start RSLinx and use the following steps to configure it to access data on the AN-X-DCSNet.

1. Add a driver. Select *Communications/Configure Drivers* and the *Configure Drivers* dialog appears.
2. From the *Available Driver Types* list, select *Remote Devices Via Linx Gateway* and click *Add New...*



Quest Technical Solutions

4110 Mourning Dove Court

Melbourne FL 32934

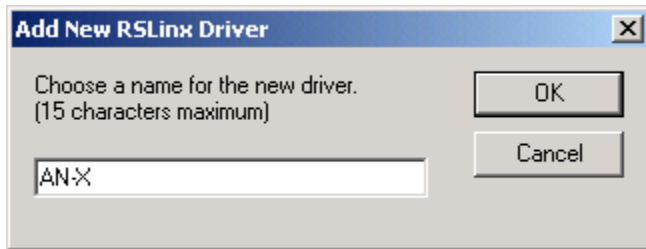
321 757-8483

www.qtsi.biz

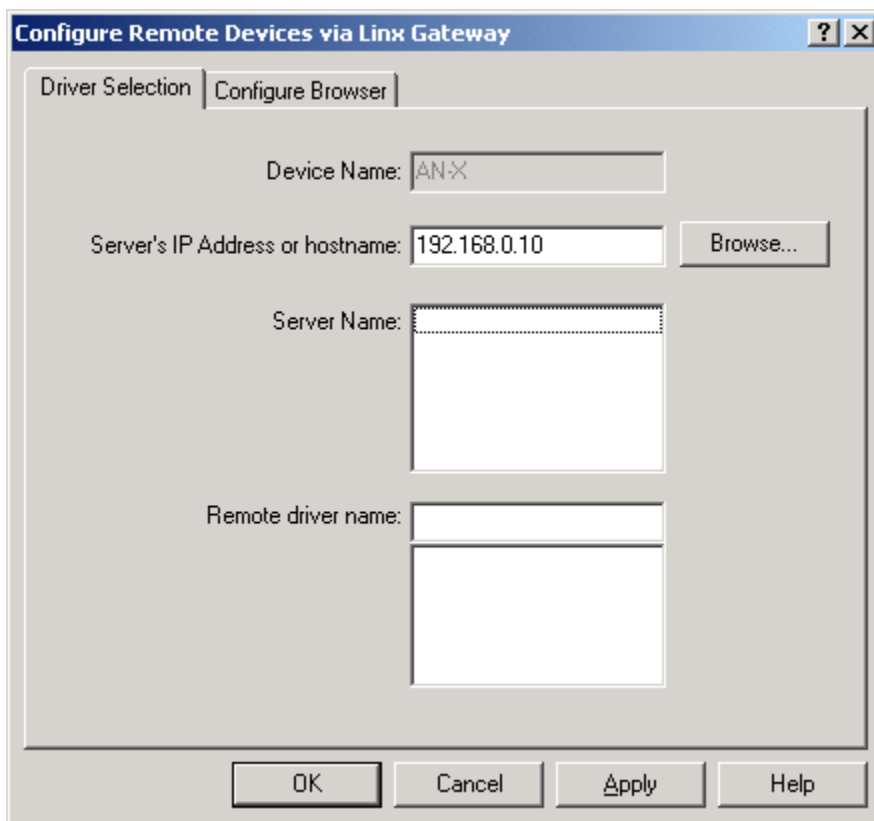


Using AN-X-DCSNet with the RSLinx OPC Server

3. Give the new driver a name and click *OK*

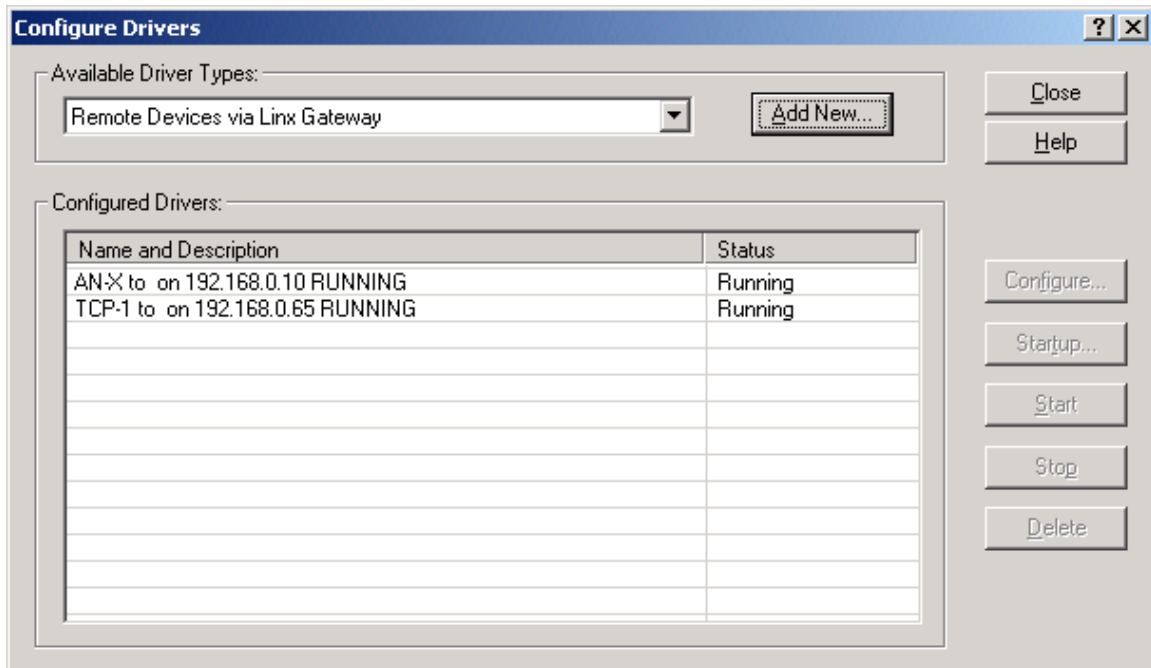


4. In the *Server's IP Address or hostname*, enter the AN-X-DCSNet IP address and click *OK*

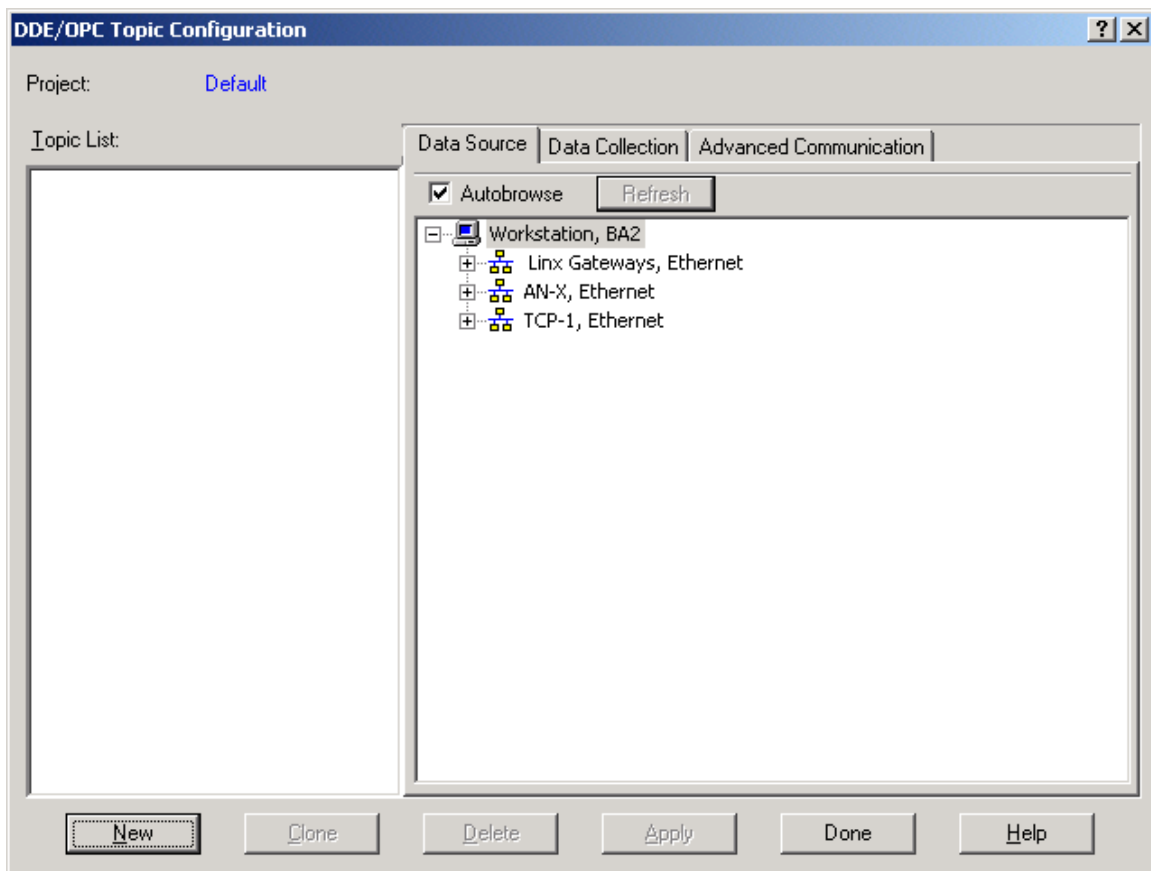


5. Check that the driver status is Running. Click Close

Using AN-X-DCSNet with the RSLinx OPC Server

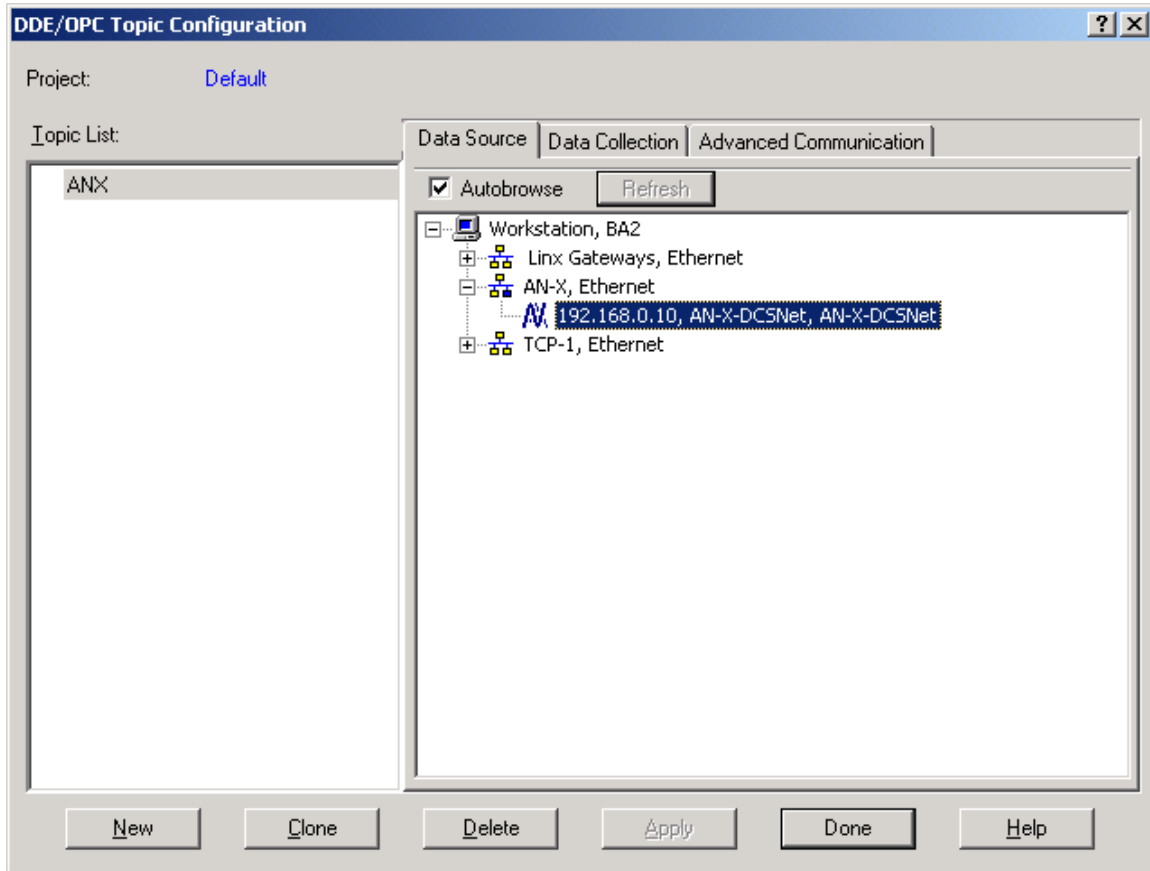


6. Select *DDE/OPC/Topic Configuration* and click *New*



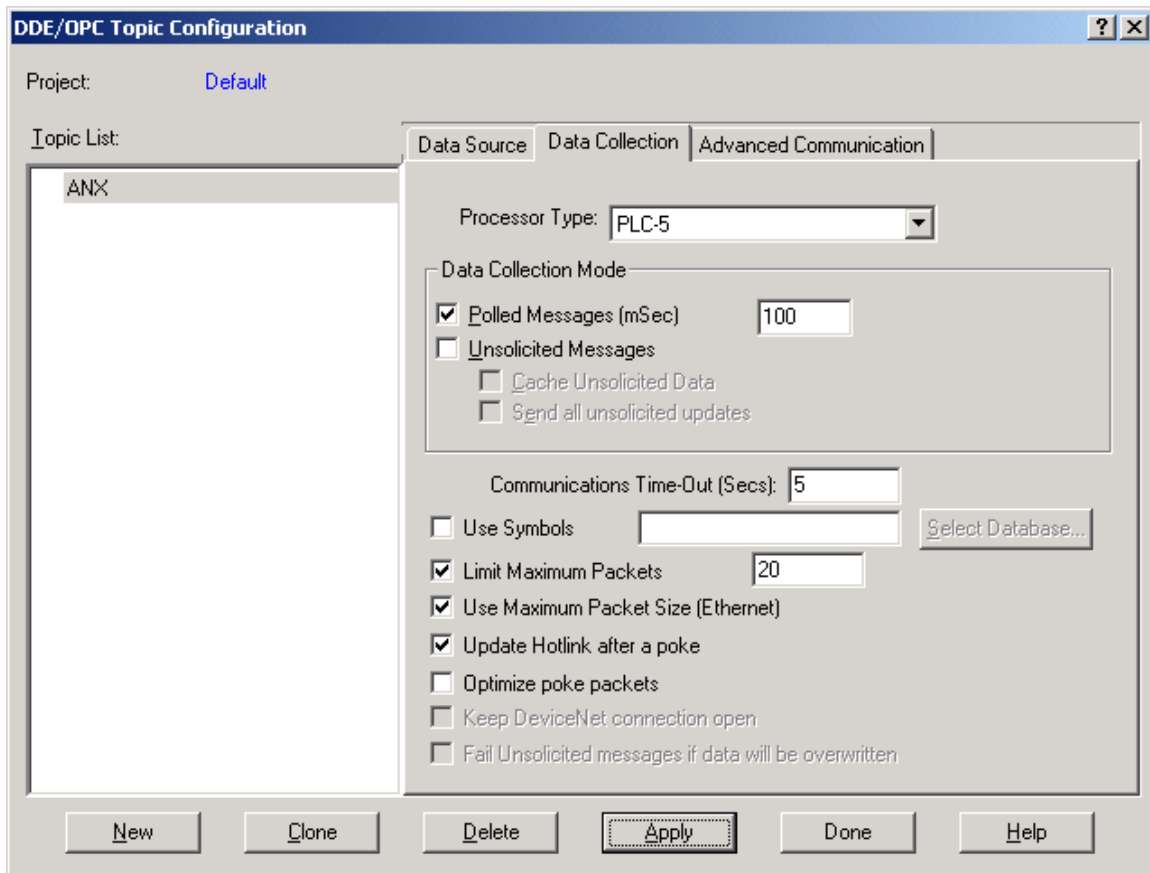
Using AN-X-DCSNet with the RSLinx OPC Server

7. Give the topic a name
8. On the *Data Source* tab, browse the path to the AN-X-DCSNet module and click **Apply**



9. On the *Data Collection* tab, set the *Processor Type* to *PLC-5*. Set the *Polled Messages* update rate to an appropriate value for your application, and leave everything else unchanged. Click **Apply**

Using AN-X-DCSNet with the RSLinx OPC Server



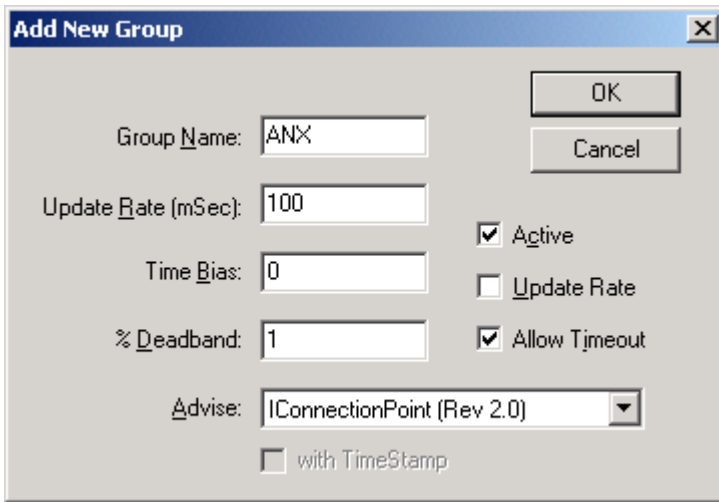
10. Click *Done* to complete the topic configuration

You can now access data using any client that can communicate with RSLinx.

To test communication, start the RSLinx Test Client (*Start/Programs/Rockwell Software/RSLinx Tools/OPC Test Client*).

1. Select *Server/Connect* and connect to the *RSLinx OPC Server*
2. Select *Group/Add Group...* to add a group. Enter the *Name* and *Update Rate* and click OK

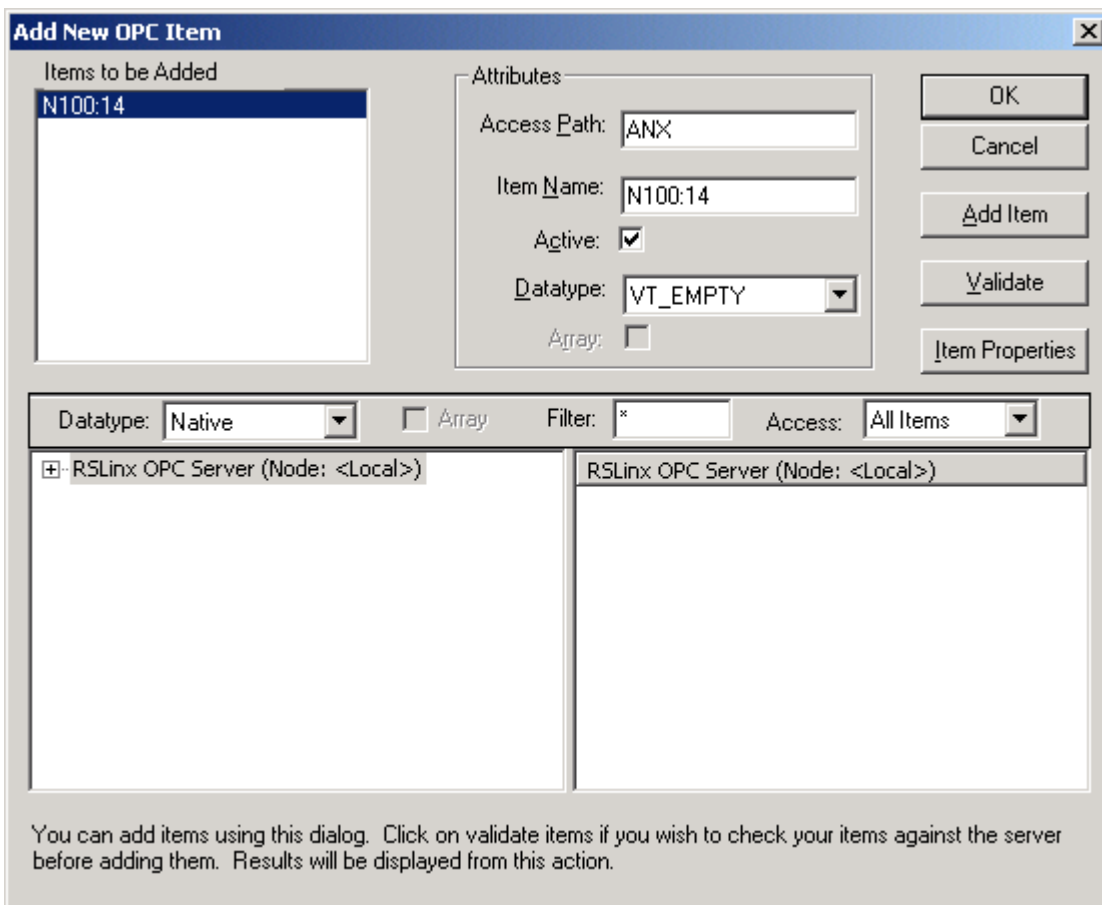
Using AN-X-DCSNet with the RSLinx OPC Server



The "Add New Group" dialog box contains the following fields and controls:

- Group Name: ANX
- Update Rate (mSec): 100
- Time Bias: 0
- % Deadband: 1
- Advise: IConnectionPoint (Rev 2.0)
- with TimeStamp:
- Active:
- Update Rate:
- Allow Timeout:
- Buttons: OK, Cancel

3. Select *Item/Add Item...*
4. For the *Access Path*, enter the OPC topic name. For the *Item Name*, enter an integer file address. AN-X uses integer file N100 for drop 0 data, file N101 for drop 1, and so on. The DCS received messages counter is found in drop 0 register 14 (N100:14) and should be incrementing if AN-X is active on a DCS network.



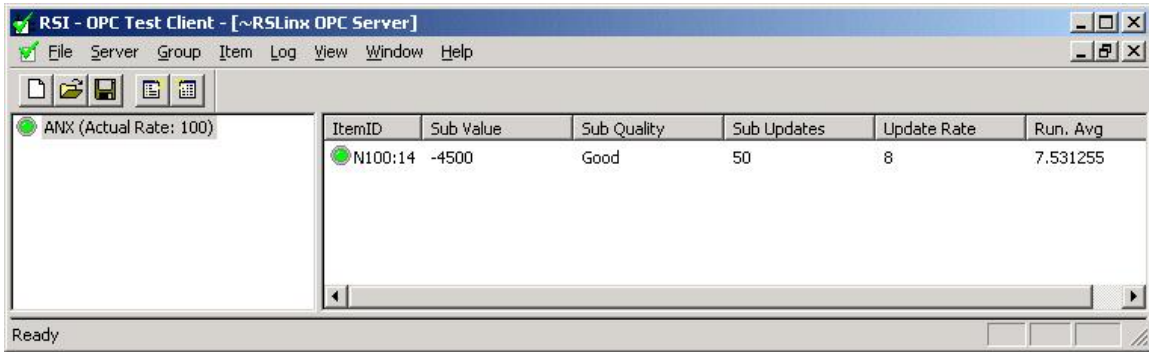
The "Add New OPC Item" dialog box contains the following fields and controls:

- Items to be Added: N100:14
- Attributes:
 - Access Path: ANX
 - Item Name: N100:14
 - Active:
 - Datatype: VT_EMPTY
 - Array:
- Buttons: OK, Cancel, Add Item, Validate, Item Properties
- Datatype: Native, Array: Filter: * Access: All Items
- Tree view: RSLinx OPC Server (Node: <Local>)
- Footer text: You can add items using this dialog. Click on validate items if you wish to check your items against the server before adding them. Results will be displayed from this action.

5. Click *OK* to accept the item.

Using AN-X-DCSNet with the RSLinx OPC Server

You will see the item update



The screenshot shows a software window titled "RSI - OPC Test Client - [~RSLinx OPC Server]". The window has a menu bar with "File", "Server", "Group", "Item", "Log", "View", "Window", and "Help". Below the menu bar is a toolbar with icons for file operations. The main area is divided into two panes. The left pane shows a tree view with a single item "ANX (Actual Rate: 100)". The right pane is a table with the following data:

ItemID	Sub Value	Sub Quality	Sub Updates	Update Rate	Run. Avg
N100:14	-4500	Good	50	8	7.531255

The status bar at the bottom of the window displays "Ready".

Quest Technical Solutions
4110 Mourning Dove Court
Melbourne FL 32934
321 757-8483
www.qtsi.biz

