

Application Note

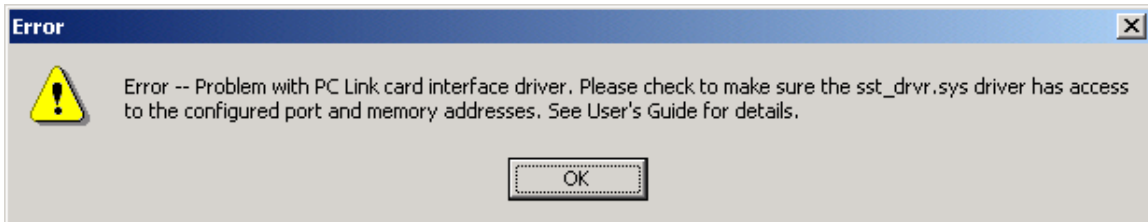
Using the AutoMax Programming Executive Offline



If you configure the AutoMax Programming Executive to use the AN-X-DCSNet module to communicate and the AN-X-DCSNet module is no longer connected to the computer, the AutoMax software fails to start and gives an error, such as



or



Use the following steps to make it possible to use the programming software offline:

1. Edit the file AUTOMAX.INI in your Windows directory, using a text editor such as Notepad.
2. Locate the line in the [Communication] section that says Use_Serial_Port=NO and change it to Use_Serial_Port=YES (YES must be uppercase)
3. Save the file.

Quest Technical Solutions

4110 Mourning Dove Court

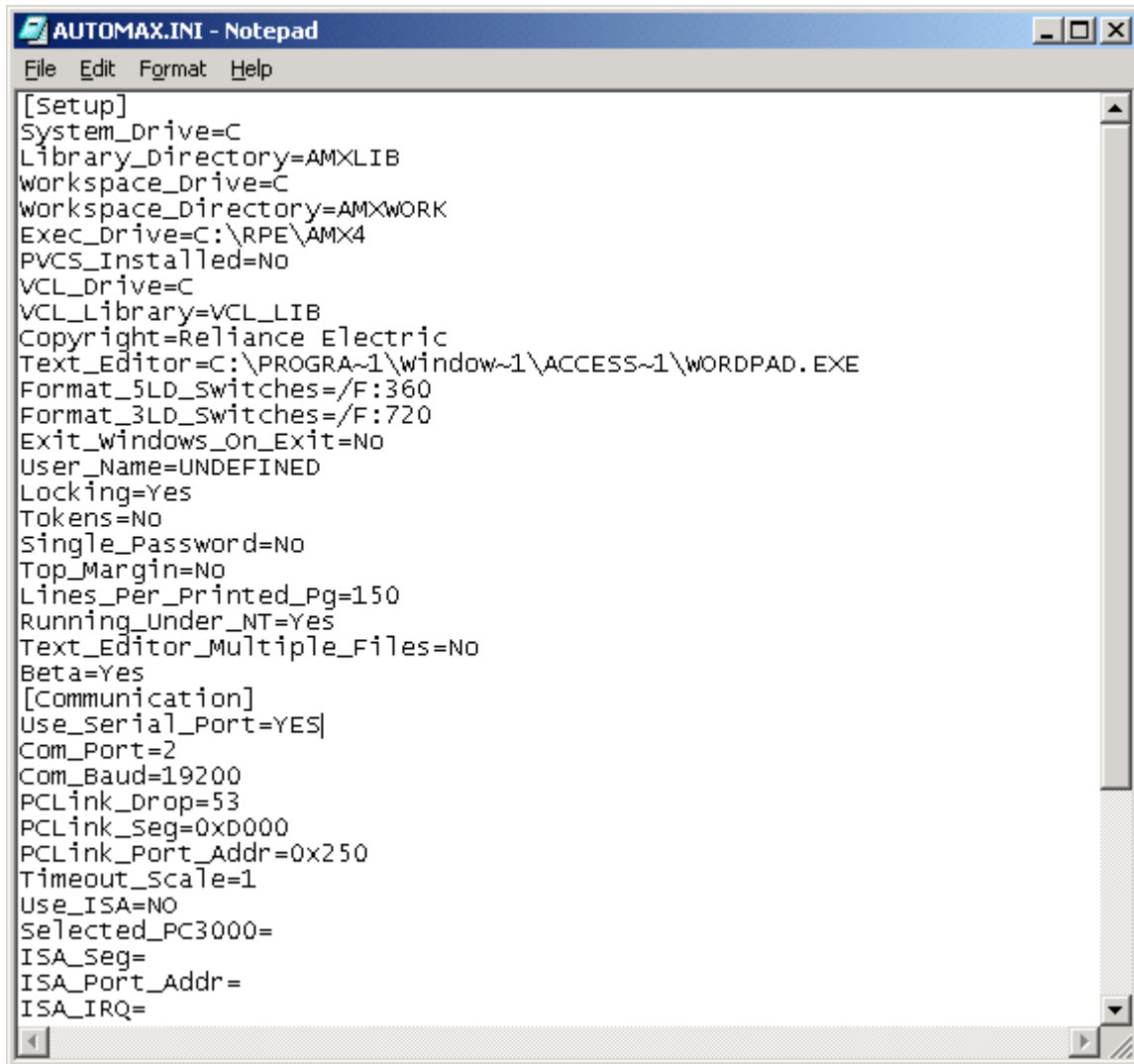
Melbourne FL 32934

321 757-8483

www.qtsi.biz



Using the AutoMax Programming Executive Offline



```
[Setup]
System_Drive=C
Library_Directory=AMXLIB
Workspace_Drive=C
Workspace_Directory=AMXWORK
Exec_Drive=C:\RPE\AMX4
PVCS_Installed=No
VCL_Drive=C
VCL_Library=VCL_LIB
Copyright=Reliance Electric
Text_Editor=C:\PROGRA~1\window~1\ACCESS~1\WORDPAD.EXE
Format_5LD_Switches=/F:360
Format_3LD_Switches=/F:720
Exit_windows_On_Exit=No
User_Name=UNDEFINED
Locking=Yes
Tokens=No
Single_Password=No
Top_Margin=No
Lines_Per_Printed_Pg=150
Running_Under_NT=Yes
Text_Editor_Multiple_Files=No
Beta=Yes
[Communication]
Use_Serial_Port=YES
Com_Port=2
Com_Baud=19200
PCLink_Drop=53
PCLink_Seg=0xD000
PCLink_Port_Addr=0x250
Timeout_Scale=1
Use_ISA=NO
Selected_PC3000=
ISA_Seg=
ISA_Port_Addr=
ISA_IRQ=
```

You should now be able to start the programming software and use it offline.

TIP: If you know you are going to be using the computer without the AN-X-DCSNet, select *Setup/Communication...* in the programming software and change the Communication Type to Serial Port before you disconnect the AN-X-DCSNet.

Quest Technical Solutions

4110 Mourning Dove Court
Melbourne FL 32934
321 757-8483

www.qtsi.biz

