

Application Note

Importing Profibus Capture Data into Excel



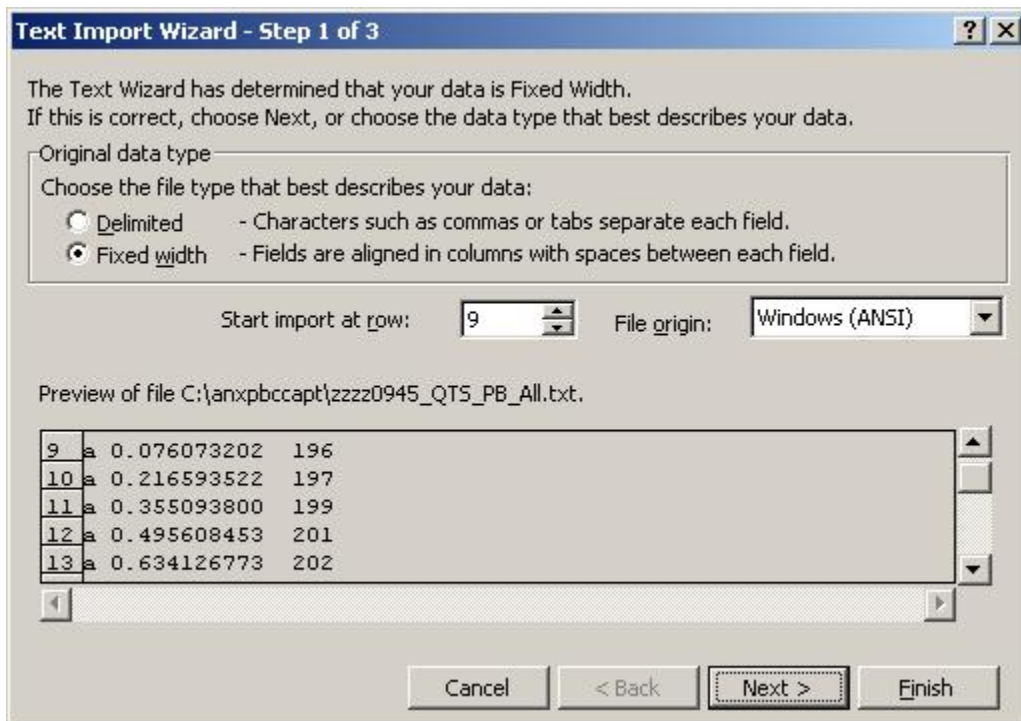
This application note describes how to import data captured from a Profibus network using an AN-X-PBCAPT module into Microsoft Excel.

Typically you would import data or timing information into Excel. You can plot data or timing information as a function of reference number or as a function of time. You can also perform statistical analysis on gap time, delta time or data values, search for maximum or minimum values of gap time, delta time, data values, etc.

When you save frames captured by AN-X-PBCAPT to a text file, the data fields are aligned in columns.

Start Excel and select *File/Open*. Set *Files of Type:* to *All Files (*.*)*. Browse and select the file you wish to import and click *Open*.

Excel displays the *Text Import Wizard – Step 1 of 3* dialog box.



Set the *Original data type* to *Fixed width*.

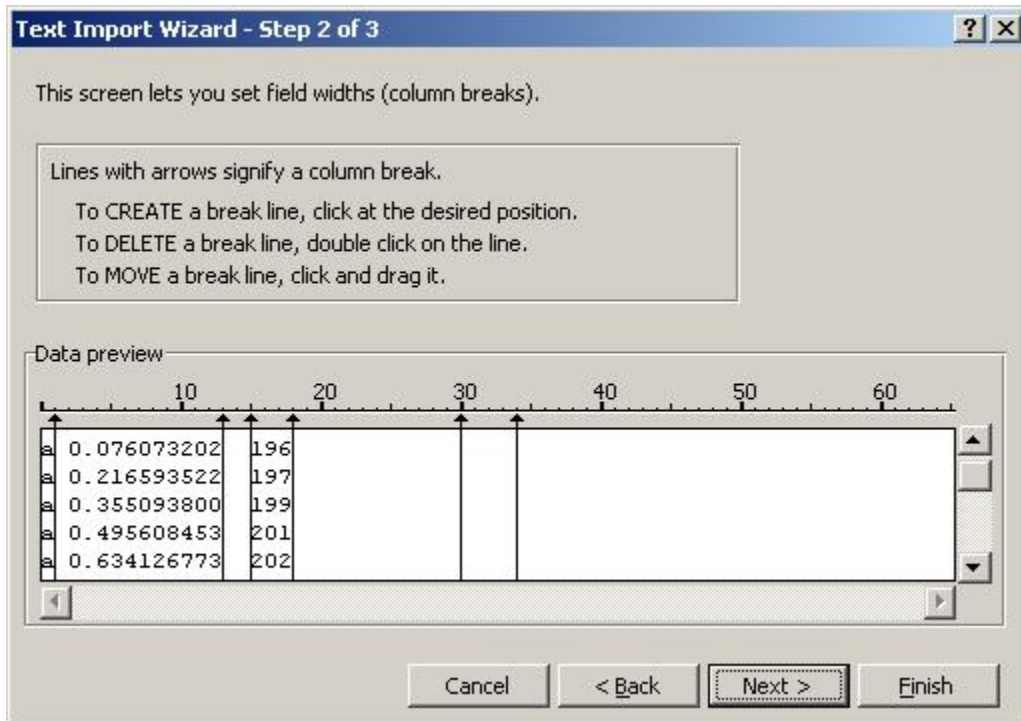
Set *Start import at row:* to the first row that contains data you want to import. The preview shows the data rows to be imported.

Set the *File origin:* to *Windows (ANSI)*

Click *Next >*

Excel displays the *Text Import Wizard – Step 2 of 3* dialog box.

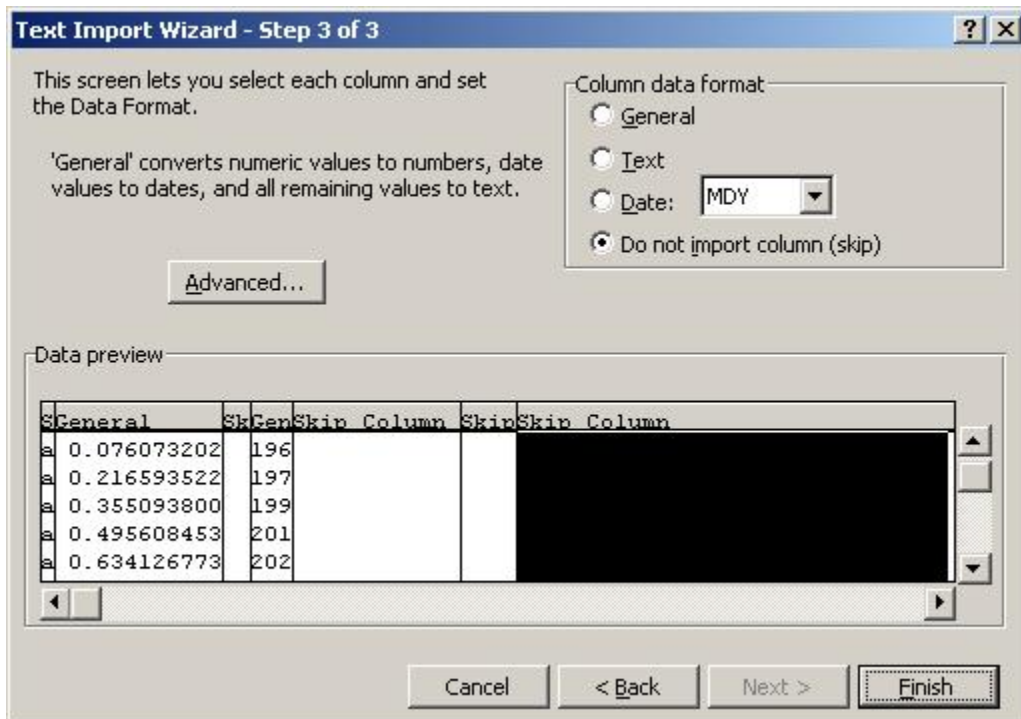
Importing Profibus Capture Data into Excel



Click on the ruler to create column breaks to mark off the data to be imported.

Click *Next >*

Excel displays the *Text Import Wizard – Step 3 of 3* dialog box.



To remove any columns you do not wish to import, click on the column header and click *Do not import column (skip)*.

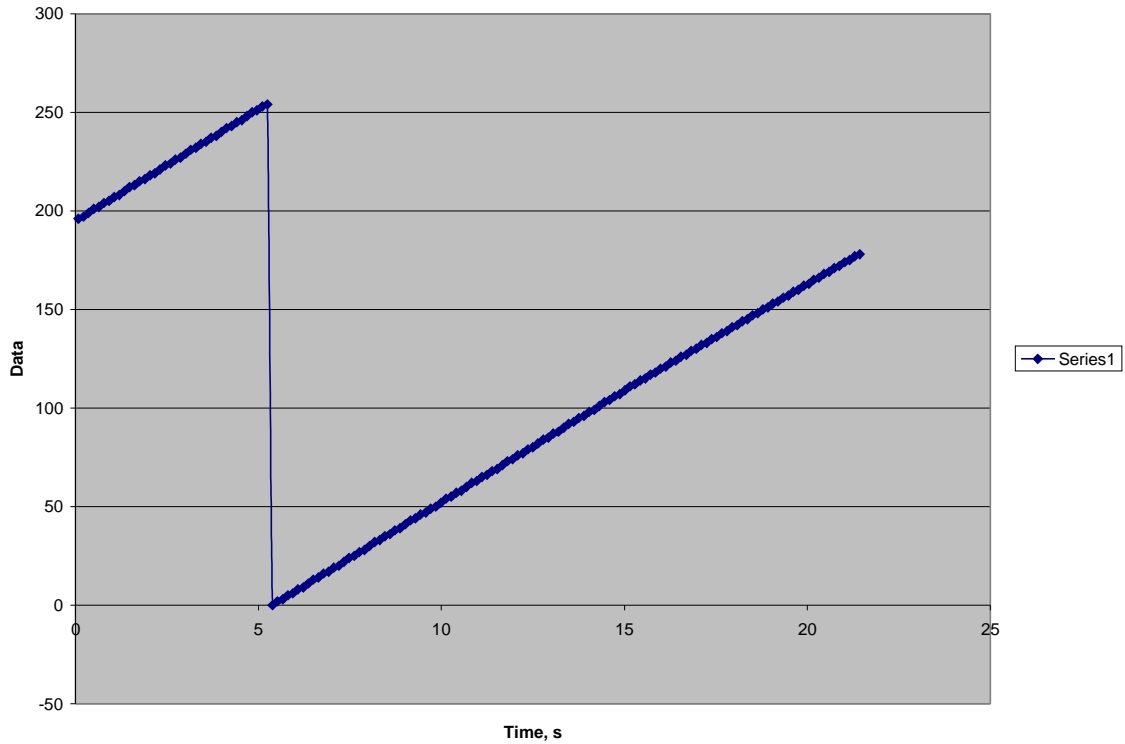
Click *Finish*

Importing Profibus Capture Data into Excel

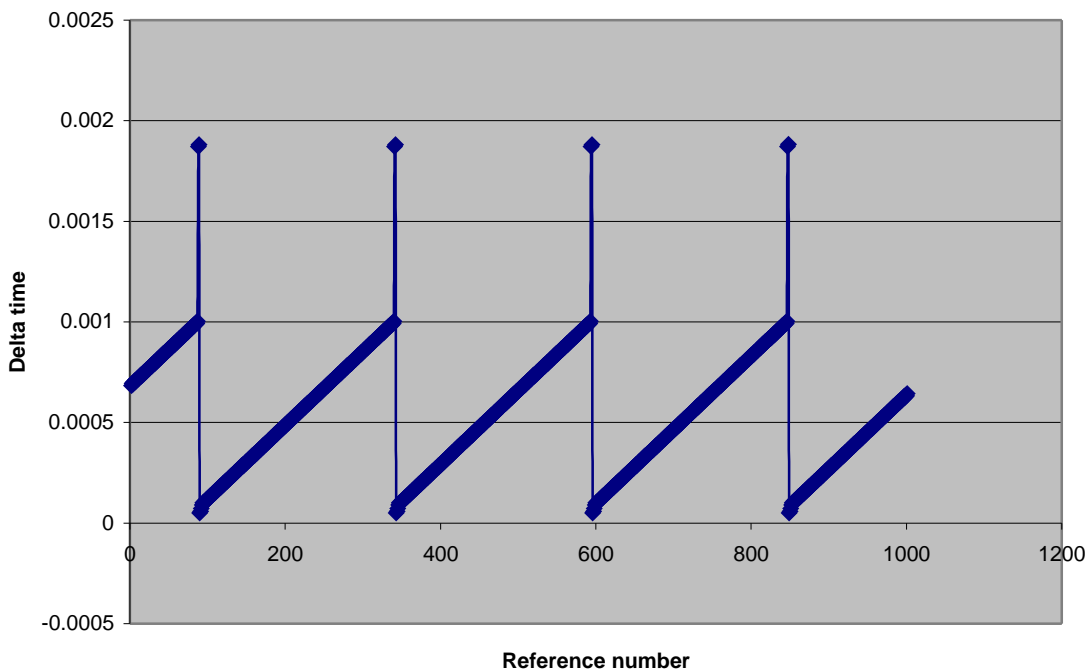
Excel imports the data you have selected.

You can now proceed to analyze or chart the imported data

Example: a graph of a data value versus time.



Example: a graph of delta time vs. reference number for several I/O scans



Tips for Preparing Text Files for Import

- Exclude fields that you don't want to import
- Choose time formats for timestamps, gap times and delta times so that there are no separators between minor units. For example, do not include commas between ms and us. Exampe: TmeAbs sc.msus
- If you want to import data values, use a signed or unsigned integer data format, not hexadecimal.
- If you want to plot I/O data values, include only I/O data frames

Quest Technical Solutions
4110 Mourning Dove Court
Melbourne FL 32934
321 757-8483
www.qtsi.biz

